

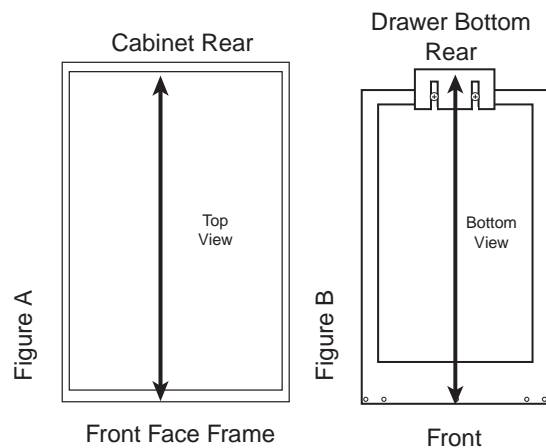
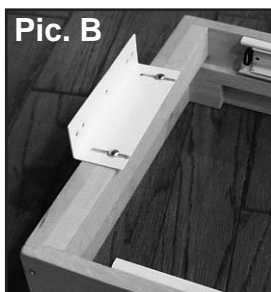
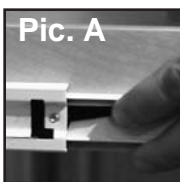
Instructions for Combination Knife Holder/Cutting Board

Step 1

Remove original drawer and slides (if applicable).

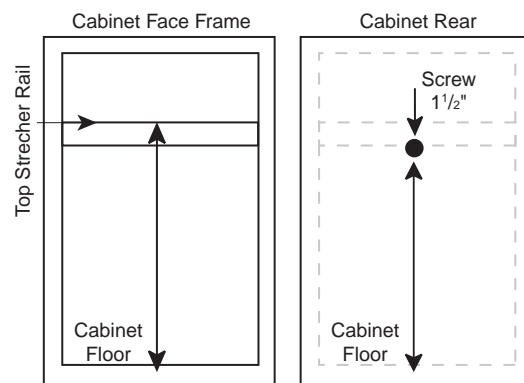
Step 2

Measure front of face frame to rear of cabinet (Fig. A). Remove drawer from slides (See Pic. A). Attach slotted side of bracket to bottom of new drawer (See Pic. B). Using your measurement from the cabinet, measure from the front of new drawer to the backside of the rear bracket for slot placement of the rear bracket (Fig. B).



Step 3

Attach a screw in the cabinet rear to act as a rest for the rear bracket when installing the unit. The height of the screw location is determined by measuring from the front floor to the top of the stretcher rail and subtracting 1-1/2". Take that measurement and transfer it to the rear in the center left to right. Leave screw sticking out about 1/4".



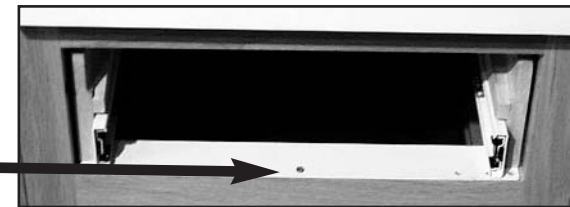
Step 4

Slide unit in drawer opening until front edge lines up with front edge of face frame stretcher rail and rear bracket rests on screw.



Step 5

Center drawer system in opening and attach a screw in center hole to face frame.



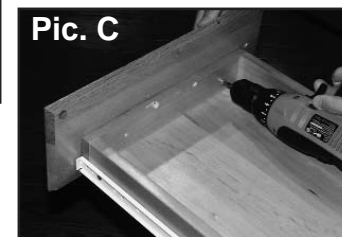
Step 6

Insert new drawer in slides, lay knife rest in drawer and slide cutting board into KCB Drawer System.



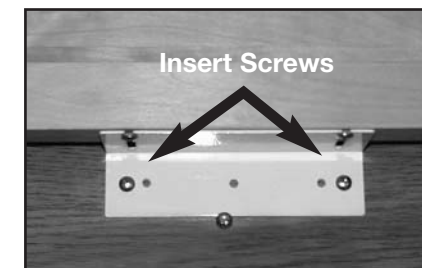
Step 7

Remove drawer front from original drawer (if applicable) and attach to new knife drawer with screws (Pic C). To align drawer front use double sided tape included (Pic. A & B). If using drawer pulls must drill holes through KCB Drawer System. To do this make sure drawer front is attached to KCB Drawer System and drill through pre-existing holes in the drawer front (Pic C).



Step 8

Close drawer completely pressing on 4 corners to ensure self aligning rear bracket is set. Install screws.



FINAL NOTE

Add provided metal pull to end of cutting board with double threaded screw for easier access. Wood threads go in board and metal threads hold knob.



4KCB-18