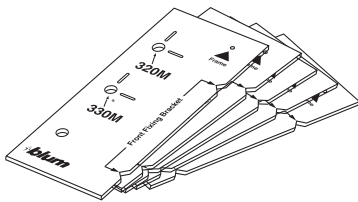


## METABOX templates

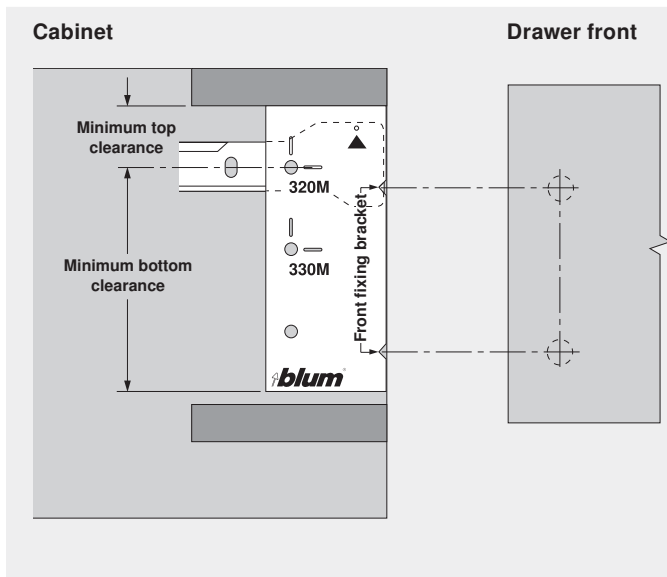


- A simple system of full scale plastic templates that represent the minimum height requirements for METABOX and have cutouts for marking cabinet profile and front fixing bracket positions.
- The METATEMP kit contains one template each for 320N, 320/330M, 320/330K, 320/330H plus a universal gallery template for all series.

METABOX templates

METATEMP

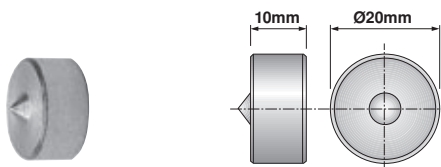
## Using the METABOX templates



The METABOX templates determine if the opening height is adequate for a particular drawer series as its overall size represents the minimum clearance.

1. Position the template either at the top or bottom of the opening with the front flush with the cabinet edge.
2. Mark the centerline for the appropriate cabinet profile (320 or 330 series) which is preset at a 37mm setback.
3. Mark the front fixing bracket locations on the cabinet side at the front V cutouts.
4. Hold the drawer front against the cabinet at the desired height position and carefully transfer the front fixing bracket horizontal center lines.
5. If cabinet is pre-line bored, use Ø5mm shelf pins to position templates on the cabinet side and proceed with steps 3 & 4.

## Drawer front template



- To transfer the center points of the Blum 295.1000 drawer front adjuster from the drawer front to the drawer box
- For drawers using TANDEM, SOLO or STANDARD runners

Drawer front template

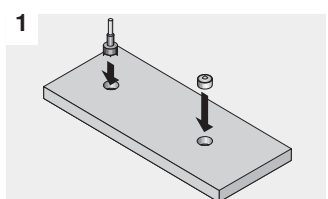
65.2950.10

**Accessories** (order separately)

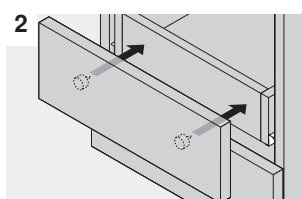
Ø20mm drill bit for center point

M01.ZB20.02 R

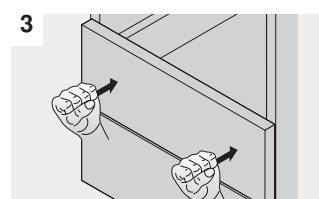
## Using the drawer front template



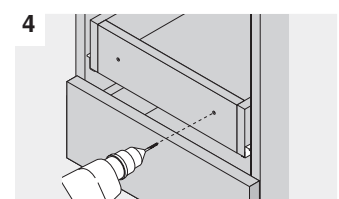
Bore Ø20mm holes in drawer front and insert template.



Position drawer front in front of installed drawer box.



Tap drawer front with hand pressure to mark drawer box.



Bore drawer box for mounting screws.