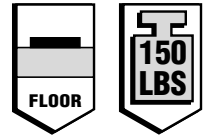
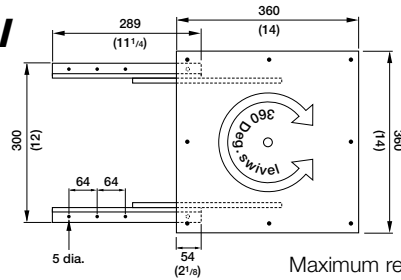


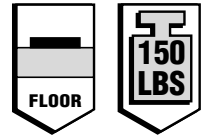
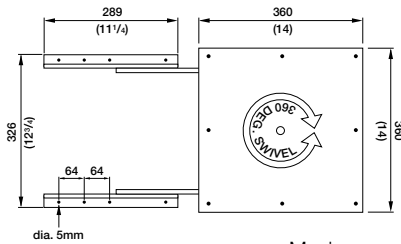
# Mounting Instructions and Recommendations

## FR 805 Regular-Extension TV Swivel



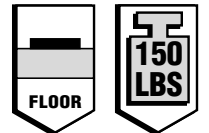
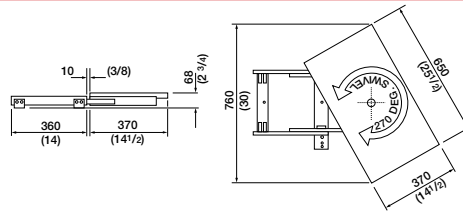
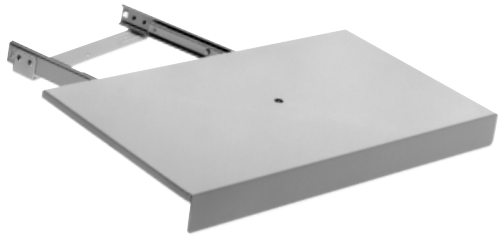
Maximum recommended TV size: 27 inches diagonal

## FR 810 Full-Extension TV Swivel



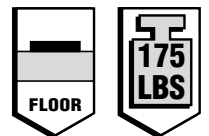
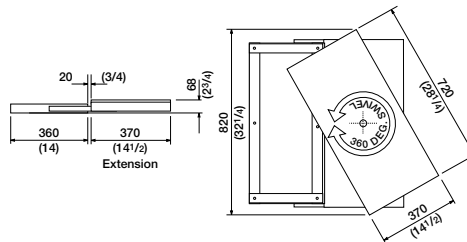
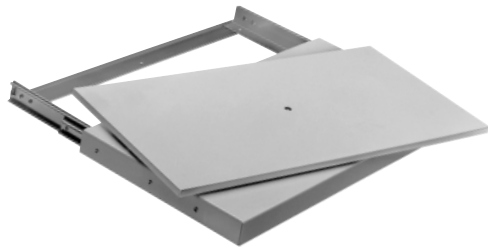
Maximum recommended TV size: 27 inches diagonal

## FR 815 Full-Extension TV Swivel



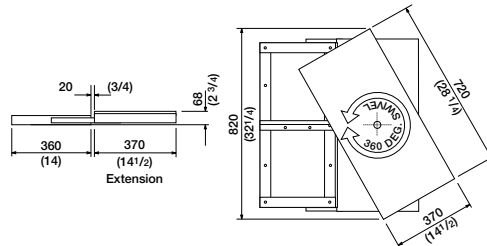
Maximum recommended TV size: 27 inches diagonal

## FR 825 Full-Extension TV Swivel



Maximum recommended TV size: 31 inches diagonal

## FR 835 Full-Extension TV Swivel



Maximum recommended TV size: 35 inches diagonal

### CAUTION

1. Make sure that shelf to which TV-swivel attaches is **fastened securely to cabinet**.
2. Make sure that cabinet **does not tip over** when TV-swivel is pulled out. Free standing cabinets may need to be securely anchored to a wall.
3. Fasten TV-swivel with the **4 thru-bolts** provided. (Additional wood screws can be used in the remaining holes).
4. Apply the **4 self adhesive pads** at the location of the feet of the television for safe non-skid operation.
5. Do not overload TV-swivel. See maximum weight capacities and television sizes listed above.
6. We do not recommend enlarging the top-plate with a board in order to fit a larger size television. This will cause greater leverage force which may damage the slide and swivel mechanism and cause unsafe operation. (FR 815, FR 825, FR 835 only).

mm (in.)